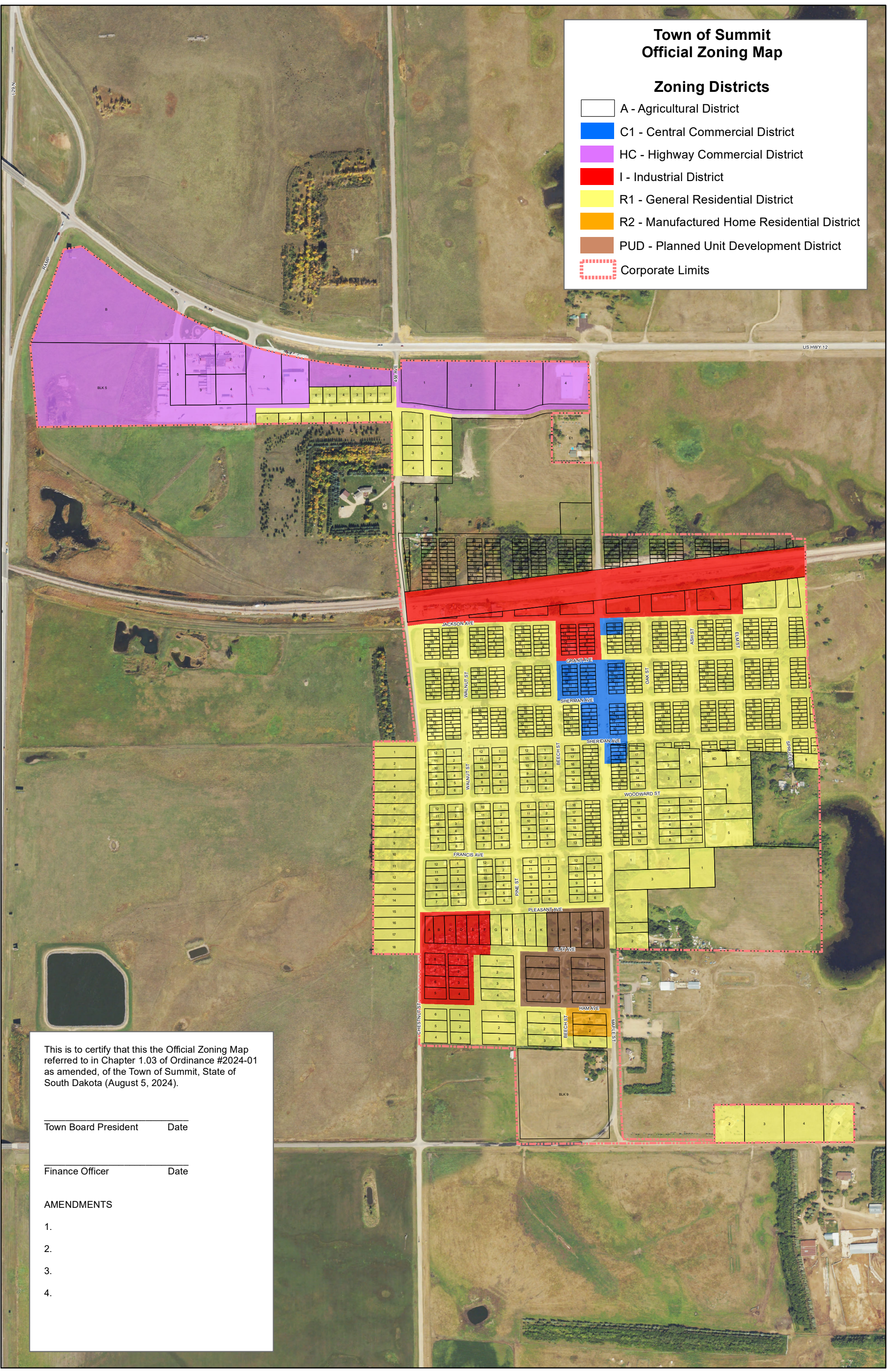


# Town of Summit Official Zoning Map

## Zoning Districts

- A - Agricultural District
- C1 - Central Commercial District
- HC - Highway Commercial District
- I - Industrial District
- R1 - General Residential District
- R2 - Manufactured Home Residential District
- PUD - Planned Unit Development District
- Corporate Limits



This is to certify that this the Official Zoning Map referred to in Chapter 1.03 of Ordinance #2024-01 as amended, of the Town of Summit, State of South Dakota (August 5, 2024).

\_\_\_\_\_  
Town Board President      Date

\_\_\_\_\_  
Finance Officer      Date

AMENDMENTS

- 1.
- 2.
- 3.
- 4.